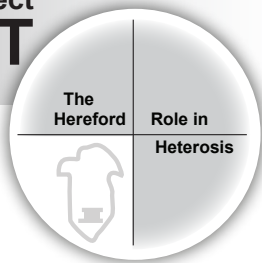


Circle A Ranch Heterosis Project FACT SHEET



In 2007 Circle A Ranch, Iberia, Mo., agreed to participate in a research project with the American Hereford Association designed to determine and measure the advantages of using Hereford genetics on commercial Angus cows.

Circle A used 10 Hereford bulls with the goal of comparing the best of its Angus herd to the best of the Hereford-Angus cross.

Throughout the project, weaning weight and economically relevant traits such as feedlot gain, feed efficiency and fertility of the black baldie females were all measured and compared to straight commercial Angus cattle. Dan Moser, associate professor of genetics at Kansas State University, analyzed and interpreted the collected data.

Results from the project documented the Hereford efficiency advantage. With a 7% increase in conception rate, along with improved feed efficiency and average daily gain, Herefords were proven the right choice for commercial producers today.

Vern Pierce, University of Missouri associate professor of agricultural economics, evaluated the performance differences between the Hereford and Angus groups including birth, weaning and feedlot growth and carcass data on the steer calves, and pregnancy rates from the female progeny of the sire groups. He developed an economic model projecting the added value of Hereford heterosis over a 10-year period and found that using Hereford bulls on Angus-based females would add \$514 net over the life of a cow or approximately \$51 per cow per year to a rancher's bottom line.

Economic models also predicted that after 10 years, due to increased fertility and longevity Hereford-sired females would generate a 20% advantage in herd size versus the straight Angus commercial cows due to increased calving and replacement options.

Bottom line: According to Pierce, if a rancher with Angus-based cows uses Hereford bulls compared to using Angus bulls he will have improved cash flow, increased herd size and more calves to sell over a 10-year period.

Project Specifics:

- 600 Circle A commercial Angus females were randomly AI-bred to 10 Hereford sires, of both proven and unproven genetics.

- The control group included progeny from three proven Angus sires, one being the top Angus sire for registrations in 2008. The average EPDs of the Angus sires would place them in the top 30% of the Angus breed for birth weight and 20% of the breed for weaning weight.
- Average birth weight for the Hereford-sired calves was 72 lb. - 3 lb. heavier than the Angus sires, but extremely desirable and nearly ideal for commercial operations.
- At weaning, the Hereford-sired calves were 11.9 lb. heavier than the Angus-sired calves, despite the Angus sires ranking in the top 20% of their breed for weaning weight EPD.
- Resulting heifer calves were developed and bred at Circle A's Lineville, Iowa, ranch. Conception rates were tracked.
- A portion of the steer calves were fed to harvest and placed on a feed efficiency test at the Circle A Feedlot in Huntsville, Mo.
- While both breed groups were similar for fat thickness (Angus = 0.52 vs. Hereford = 0.54), Hereford-sired steers had about 13 more lb. of carcass weight and about $\frac{3}{4}$ of an inch more ribeye area.
- While feed conversion was nearly identical, Hereford-sired steers outgained the Angus-sired steers by almost 15-hundredths of a lb. per day.
- Heifer calves were bred and part of the group was marketed through the Circle A Production Sale with the baldie Average price \$110 more than straight blacks.
- Circle A staff appreciated the disposition of the Hereford sired calves.



HEREFORDS - THE EFFICIENCY EXPERTS

Stroh/Friedt
Herefords

Stockmen's West
(701) 225-8145

Scott Weishaar
Auctioneer
(701) 872-5299

Jill & Marc Hotchkiss
(605) 866-4495

Levi Landers - AHA
(308) 730-1396

Joe Rickabaugh - AHA
(816) 842-3757

Terry Robinson
Farm & Ranch Guide
(701) 471-5153

Special Guests

Bill Klein
NDHA President



STROH HEREFORD *Welcomes You*

This year Stroh Herefords is proud to extend a warm and inviting welcome to the Stroh Hereford 20th Annual Production Sale. Not only does this sale mark our 20th production sale, but it also marks Tony Stroh's 60th year in the Hereford cattle business. Over the years many things have changed here at the Stroh Hereford Ranch, but our focus has always been to raise bulls which are ready to perform out in the range for today's cattleman, not in a show pen at Rapid City or Denver.

Once again this year we are teaming up with Gary and Kirsten Friedt and their family to bring you a sound, solid set of bulls. This year's sale also has a nice set of females to offer. By teaming up with Friedt's, our hopes are that we can offer you the cattleman a larger selection of cattle to choose from in order to meet your individual ranch needs.

This year will be a challenging year for the cattle producer. This is why we are encouraging our cattlemen to consider running a hereford bull with their Black Angus cows. Recent findings show that using a Hereford bull on an Angus-based cow herd will increase the rancher's bottom line by a notable amount. In today's uncertain economy with unstable cattle markets, this is something to consider.

We want to thank you our friends, family and customers for making this production sale possible. We are fully aware that without you and your support we would not have been in business for as long as we have been. Thank you!!!!

In closing, we invite you to have lunch with us the day of the sale. Should you have any questions or concerns, please do not hesitate to call or e-mail us. We also encourage you to come and see the animals prior to the sale day. We look forward to showing you the cattle and visiting with you before the sale. The coffee pot is always on, and on a good day we may even have some Oreo cookies to share. Speaking of how things have changed over the years, did you know they now make mint Oreo cookies?!

As Always,
Tony and Leona Stroh and
Mike, Dawn, Lucas & Matthew Stroh

TERMS & CONDITIONS

All cattle will be sold to the highest bidder without reserve. The terms of the sale will be cash. The auctioneer will settle any dispute as to bids.

Each animal will become the property of the buyer as soon as sold. Cattle will be cared for a reasonable length of time after the sale, at the buyer's risk.

All bulls of breeding age are guaranteed breeders. If an animal fails to breed after a trial of six months, it may be returned to the seller at buyer's expense. The seller reserves the right to try said animal for six months and if it proves a breeder to return it to the station of buyer at seller's expense. If the animal proves to be a non-breeder, the purchase price will be refunded or an equal animal substituted. Request for adjustment must be made within six months from time of purchase.

Extreme care has been taken in copying each pedigree to avoid errors. We are not to be held responsible for any error which might appear and which is beyond our control in the printing of the catalog.

Everyone attending this sale does so at his own responsibility and risk, and without liability on the part of the owner or his employees.

Stroh Hereford Ranch

We will cooperate with delivery arrangements or take \$25⁰⁰ (per bull) off if picked up on sale day (Bulls Only)

HERD BULLS

Ref. Sire

A

HH ROBIN HOOD L130

Calved 3/24/2001 • Tattoo L130 • Reg #: 42203797

HR ROBIN HOOD 52F CFR Robinson 359
SR ROBIN HOOD 249 HR Prophet 62C
 SR FRANCI 684 HH Advance 872X
 SR Donnal 476

MH PATRIOT 3159 BB Patriot 0293
HH MISS PATRIOT 7573 MH Miss Donna 921
 HH MISS STAR 3060 K&B Horizon 9208 1ET
 HH Miss Magnum 9694

BW EPD	3.6
WW EPD	44
YW EPD	88
Milk EPD	30
M&G	52

Fat	REA	IMF	BMI	CEZ	CHB
-0.008	+0.21	+0.24	\$16	\$25	\$10



HH ROBIN HOOD L130

Ref. Sire

B

OXH DIAMOND 2215

Calved 4/16/2002 • Tattoo RE 2215 • Reg #: 42302378

BEL L DIAMOND 127 ET SNS Generator 28X
JNHR DIAMOND ET 4148 Bell L Miss Britisher 2N
 CH AP AMY 41Y IMR All Pro 5ET
 CH L1 Dominette 33P

OXH MARK DOMINO 5158 OXH Mark Domino 8020
OXK LILA 8124 OXH Cara 3020
 OXH SARA 4130 F Spectre 143
 OXH Lona 0023

BW EPD	4.8
WW EPD	49
YW EPD	67
Milk EPD	32
M&G	57

Fat	REA	IMF	BMI	CEZ	CHB
-0.003	+0.30	-0.16	\$7	\$12	\$17



OXH DIAMOND 2215

Ref. Sire

C**MH DAKOTA LAD 3164**

Calved 4/01/2003 • Tattoo 3164 • Reg #: 42403649

SR LAD 447 Upstream Lad 1082
MH DAKOTA 0230 SR Kara 871
 JV ANGEL 684 JV General 418
 VR Miss Domett D98

WT 90 DOMINO 065 CL 1 Domino 590
MISS 065 DOMNET 611 DOD WT Miss Energy 813
 MH MISS SPECTRE 448 F 003 Spectre 297
 MH Miss Domino 0166

BW EPD	3.4
WW EPD	37
YW EPD	62
Milk EPD	23
M&G	42

Fat	REA	IMF	BMI	CEZ	CHB
+0.055	-0.18	+0.06	\$12	\$12	\$12

**MH DAKOTA LAD 3164**

Ref. Sire

D**HH CENTURION P517**

Calved 3/14/2004 • Tattoo P517 • Reg #: 42521113

BAR-N CENTURION 921J BP Manning ET 109G
KB CENTURION 179 LCI 83A Transalta Lass 36C
 KB L1 DOMINETTE 748 GB L1 Domino 804
 KB Static Miss 07

ORE 4411 MRK 7078 1ET NX Mark Class 4411
HH MISS ORE MARK K710 L Star Donna 17L 1ET
 HH MISS ANDREW 6279 DOD OXH Anthony 0133
 HH Miss Breaker 0991

BW EPD	7.6
WW EPD	53
YW EPD	91
Milk EPD	23
M&G	50

Fat	REA	IMF	BMI	CEZ	CHB
+0.022	-0.02	+0.06	\$12	\$7	\$20

Ref. Sire

E**KB L1 DOMINO 563R**

Calved 2/05/2005 • Tattoo 563 • Reg #: 42570550

HH ADVANCE 965J CL 1 Domino 6103F
RCH ADVANCE 2139 HH Miss Advance 739G DOD
 RB L1 DOMINETTE 8025 RB L1 Domino 5112
 RB L1 Dominette 6108

ORE 4411 MRK 7078 1ET NX Mark Class 4411
HH MISS ORE MARK K710 L Star Donna 17L 1ET
 HH MISS ANDREW 6279 DOD OXH Anthony 0133
 HH Miss Breaker 0991

BW EPD	3.1
WW EPD	49
YW EPD	84
Milk EPD	17
M&G	42

Fat	REA	IMF	BMI	CEZ	CHB
-0.012	+0.32	+0.16	\$27	\$18	\$27

This bull is listed in the American Hereford Association top 200 active sire list for Baldy Maternal Profit Index.

Ref. Sire

F**SH BONANZA 5007**

Calved 5/23/2005 • Tattoo 5007 • Reg #: 42642653

LPG BONANZA 52G CTY Extra 335C
F BONANZA 027 LPG 8080 Volt Lass 22C
 F MS MONTANA 454 1ET F Mr Power 137
 F Ms Spectre 200 1ET

CL 1 DOMINO 9149 SH Advancer 729
SH MISS DOMINO 808 C L1 Ida 6003
 LADY DUKE 2073 SH Duke 016
 Miss Domino 7074

BW EPD	6.2
WW EPD	48
YW EPD	77
Milk EPD	16
M&G	40

Fat	REA	IMF	BMI	CEZ	CHB
-0.007	+0.10	-0.01	\$14	\$11	\$19

AI HERD SIRES

Ref. Sire

G**/S MR. MOM 7745**

Calved 2/27/1997 • Tattoo 7745 • Reg #: 40018158

CL 1 DOMINO 386 L1 Domino 77618
MISTER MOM 221 CL 1 Dominette 832
 GG MS STANDARD 002 F H4S Standard 717
 GG Miss L1 DOM 654

C MASTERPLAN 92043 SH Advancer 729
/S MS PEER PLAN 526E C L1 Ida 6003
 /S PEERLESS LASS 948 SH Duke 016
 Miss Domino 7074

BW EPD	4.0
WW EPD	49
YW EPD	82
Milk EPD	31
M&G	56

Fat	REA	IMF	BMI	CEZ	CHB
+0.031	+0.23	-0.10	\$13	\$15	\$18

**/S MR. MOM 7745**

EPDS FOR 2008 BORN CALVES

Breed Averages

CED	BW	WW	YW	Milk	M&G	CEM	SC
0	3.5	41	66	16	37	.06	0.6
FAT	REA	IMF	BMI\$	CEZ	CHB\$		
0.002	0.17	.03	15	14	18		

The Hereford Indexes are:

Baldy Maternal Index (BMI\$)

An index to maximize profit for commercial cow-calf producers who use Hereford bulls in rotational crossbreeding programs on Angus-based cows and heifers. Retained ownership of calves through the feedlot phase of production is assumed, with fed cattle marketed on a Certified Hereford Beef (CHB) LLC pricing grid.

Certified Hereford Beef Index (CHB\$)

A terminal sire index, where Hereford bulls are mated to British-cross cows and all offspring are sold as fed cattle on a CHB LLC pricing grid.

Calving EZ Index (CEZ\$)

This index is similar to BMI\$, except that Hereford bulls are mated only to yearling heifers. This index has increased emphasis on direct and maternal calving ease compared with the other indexes.

The index values for each animal result from multiplying each of the animals EPDs by the relative economic value of a one-unit increase in that trait under each scenario. The economic weightings were developed by Michael MacNeil, research geneticist with the USDA Agricultural Research Service in Miles City, Montana.

PLEASE JOIN US FOR A
Free Lunch!

Junior Herd Sires

Ref. Sire

H

BLL RED ADDITION 175T

Reg #: P42808910

PAHL 36H LIMITED EDITION 62L LRD Red Homeboy 36H
SH RED EDITION 06N Pahl 116C Gina 53G
 SH MISS DIAMOND 950 JNHR 414 Diamnd 164D
 SH Miss Flash 136

XTC 27TH SUNSHINE LAD 58K XTC Sunshine Tempest 27H
LADY 58K DIAMND 106P XTC 13U Jasmine 31G
 BLL LADY DIA 50L JNHR 414 Diamnd 164D
 Lady Brigadeer 22G

BW EPD	4.7
WW EPD	46
YW EPD	73
Milk EPD	17
M&G	40

Fat	REA	IMF	BMI	CEZ	CHB
+0.002	+0.29	-0.03	\$17	\$12	\$18



BLL RED ADDITION 175T

Ref. Sire

I

KB L1 DOMINO 826U

Reg #: E42878538

HH ADVANCE 7046G CL 1 Domino 500E
KB L1 DOMINO 218 HH Miss Advance 496D
 MONTANA MISS 011 CL 1 Domino 5101E
 Montana Miss J336

CL1 DOMINO 180L HH Advance 767G 1ET
KB L1 DOMINETTE 636 CL 1 Dominette 6113F
 KB L1 DOMINETTE 323 HH Advance 0072K
 KB L1 Dominette 111

BW EPD	1.5
WW EPD	49
YW EPD	89
Milk EPD	27
M&G	52

Fat	REA	IMF	BMI	CEZ	CHB
-0.045	+0.57	-0.01	\$22	\$21	\$28

Thank You
FOR ATTENDING
OUR SALE

Ref. Sire

J**CHURCHILL RANCHER 810 8U ET**

Reg #: 42884833

MH DAKOTA 0230..... SR Lad 447
CHURCHILL RANCHER 592R..... JV Angel 684
 CHURCHILL LADY 202..... HH Advance 767G 1ET
 Churchill Lady 0113
 CL 1 DOMINO 9126J 1ET..... HH Advance 767G 1ET
CL 1 DOMINETTE 301N..... CL 1 Dominette 490
 CL 1 DOMINETTE 8184H..... CL 1 Domino 522E
 CL 1 Dominette 359

BW EPD	2.7
WW EPD	53
YW EPD	82
Milk EPD	29
M&G	55

Fat	REA	IMF	BMI	CEZ	CHB
+0.032	+0.14	+0.28	\$22	\$16	\$27

COMING 2 YEAR OLDS**801 SHR MISTER MOM 801**

Calved 3/29/2008 • Tattoo 801 • Horned Bull

MISTER MOM 221..... CL 1 Domino 386
/S MISTER MOM 7745..... GG MS Standard 002
 /S MS PEER PLAN 526E..... C Masterplan 92043
 /S Peerless Lass 948

F BONANZA 027..... LPG Bonanza 52G
MISS BONANZA 587..... F MS Montana 454 1ET
 SH L1 LADY DOMINO 164..... KB L1 Domino 6102
 Lady Arrow 2037

Fat	REA	IMF	BMI	CEZ	CHB
+0.02	+0.04	-0.12			

Act BW	83
205 Day Wt.	691
365 Day Wt.	1020
BW EPD	3.6
WW EPD	46
YW EPD	75
Milk EPD	21
M&G	44

A stylish, trim bull with moderate birthweight. His mother is a super female that produces a nice calf year after year.

805A SH DAKOTA LAD 805A

Calved 4/01/2008 • Tattoo 805A • Horned Bull

MH DAKOTA 0230..... SR Lad 447
MH DAKOTA LAD 3164..... JV Angel 684
 MISS 065 DOMNET 611..... WT 90 Domino 065
 MH Miss Spectre 448

F BONANZA 027..... LPG Bonanza 52G
MISS BONANZA 500..... F MS Montana 454 1ET
 SH LADY SPECIAL 727..... F Special 526 1ET
 Lady Advancer 3015

Fat	REA	IMF	BMI	CEZ	CHB
+0.02	-0.32	-0.07	\$11	\$13	\$10

Act BW	91
205 Day Wt.	552
365 Day Wt.	951
BW EPD	4.1
WW EPD	37
YW EPD	57
Milk EPD	18
M&G	36

805B SHR MISTER MOM 805B

Calved 3/31/2008 • Tattoo 805B • Horned Bull

MISTER MOM 221 CL 1 Domino 386
 /S MISTER MOM 7745 GG MS Standard 002
 /S MS PEER PLAN 526E C Masterplan 92043
 /S Peerless Lass 948

PD ADVANCE 9023 CFR Advance 643
LADY ADVANCE 101 PD Miss Power 301
 SH 1 MS DOMINO 6038 CL 1 Domino 9149
 Standard Lady 3038

Fat	REA	IMF	BMI	CEZ	CHB
+0.02	-0.02	-0.06			

Act BW	77
205 Day Wt.	669
365 Day Wt.	1000
BW EPD	3.6
WW EPD	46
YW EPD	75
Milk EPD	21
M&G	44

808 SH ROBIN HOOD 808

Calved 4/03/2008 • Tattoo 808 • Horned Bull

SR ROBIN HOOD 249 HR Robin Hood 52F
HH ROBIN HOOD L130 SR Franci 684
 HH MISS PATRIOT 7573 MH Patriot 3159
 HH Miss Star 3060

F SPECIAL 526 1ET Montana Special 1ET
MISS SH SPECIAL 043 F Louise 842
 SH 1 MISS DOMINO 705 CL 1 Domino 9149
 SH Jackie 2032

Fat	REA	IMF	BMI	CEZ	CHB
+0.00	+0.04	+0.10	\$14	\$13	\$14

Act BW	70
205 Day Wt.	694
365 Day Wt.	981
BW EPD	0.2
WW EPD	31
YW EPD	59
Milk EPD	23
M&G	38

This bull had a 70 pound birthweight with good EPD's to match.

809 SH L1 DOMINO 809

Calved 4/03/2008 • Tattoo 809 • Horned Bull

RCH ADVANCE 2139 HH Advance 965J
KB L1 DOMINO 563R RB L1 Dominette 8025
 KB DOMINETTE 3128 SNS 47G Silver Dandy 11J
 KB L1 Dominette 7127

F BONANZA 027 LPG Bonanza 52G
MISS BONANZA 209 F MS Montana 454 1ET
 SH 1 MS DOMINO 6029 CL 1 Domino 9149
 Miss Domino 030

Fat	REA	IMF	BMI	CEZ	CHB
+0.00	+0.05	+0.10	\$19	\$15	\$20

Act BW	80
205 Day Wt.	686
365 Day Wt.	982
BW EPD	1.9
WW EPD	45
YW EPD	70
Milk EPD	17
M&G	40



809

812 NON-REGISTERED BULL

Calved 4/02/2008 • Tattoo 83

/S MR. MOM 7745

F Bonanza 027

MISS BONANAZA 469



812

Act BW	WW EPD	YW EPD	Milk	M&G	Fat	REA
92					0.12	0.11

813 SHR MISTER MOM 813

Calved 4/04/2008 • Tattoo 813 • Horned Bull

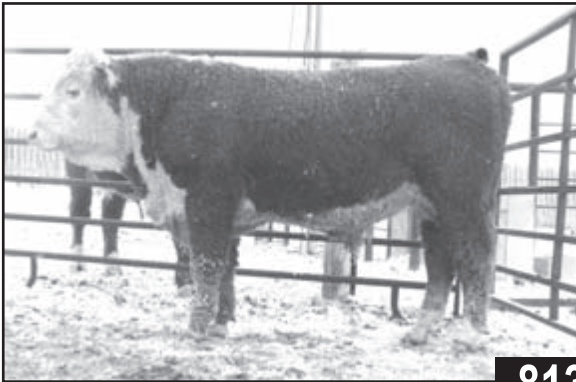
MISTER MOM 221 CL 1 Domino 386
 /S MISTER MOM 7745 GG MS Standard 002
 /S MS PEER PLAN 526E C Masterplan 92043
 /S Peerless Lass 948

KB L1 DOMINO 661 HH Advance 492D
 SH L1 LADY DOMINO 202 Montana Miss J241
 LADY STANDARD 5055 DS Cooneye 0843
 Miss Domino 047

Fat	REA	IMF	BMI	CEZ	CHB
+0.01	+0.12	-0.10	\$12	\$14	\$14

Act BW	84
205 Day Wt.	710
365 Day Wt.	1015
BW EPD	3.5
WW EPD	41
YW EPD	66
Milk EPD	21
M&G	41

A moderate birthweight with high weaning and gaining ability. Also a very appealing bull to look at.



813

816A SH MISTER MOM 816

Calved 4/05/2008 • Tattoo 816 • Horned Bull

MISTER MOM 221 CL 1 Domino 386
 /S MISTER MOM 7745 GG MS Standard 002
 /S MS PEER PLAN 526E C Masterplan 92043
 /S Peerless Lass 948

F BONANZA 027 LPG Bonanza 52G
 MISS BONANZA 438 F MS Montana 454 1ET
 SH 1 MISS DOM 5022 CL 1 Domino 9149
 Miss Domino 2011

Fat	REA	IMF	BMI	CEZ	CHB
+0.01	+0.12	-0.12	\$14	\$13	\$19

Act BW	89
205 Day Wt.	739
365 Day Wt.	1085
BW EPD	4.5
WW EPD	53
YW EPD	85
Milk EPD	19
M&G	45

This bull has an excellent weaning weight. His mother has a nice, tight udder. You will appreciate his size and appearance.

817 SH L1 DOMINO 817

Calved 4/04/2008 • Tattoo 817 • Horned Bull

RCH ADVANCE 2139..... HH Advance 965J
KB L1 DOMINO 563R..... RB L1 Dominette 8025
 KB DOMINETTE 3128..... SNS 47G Silver Dandy 11J
 F BONANZA 027..... LPG Bonanza 52G
MISS BONANZA 305..... F MS Montana 454 1ET
 SH L1 LADY DOMINO 832..... KB L1 Domino 661
 SH 1 Miss Dom 5011

Fat	REA	IMF	BMI	CEZ	CHB
+0.00	+0.11	+0.02	\$19	\$16	\$18

Act BW	84
205 Day Wt.	616
365 Day Wt.	949
BW EPD	2.3
WW EPD	40
YW EPD	67
Milk EPD	18
M&G	38

816B SHR MISTER MOM 816B

Calved 4/04/2008 • Tattoo 816B • Horned Bull

MISTER MOM 221..... CL 1 Domino 386
/S MISTER MOM 7745..... GG MS Standard 002
 /S MS PEER PLAN 526E..... C Masterplan 92043
 F BONANZA 027..... LPG Bonanza 52G
MISS BONANZA 306..... F MS Montana 454 1ET
 MISS SPECTACULAR 761..... KB L1 Domino 427
 Miss Power Time 3026

Fat	REA	IMF	BMI	CEZ	CHB
+0.01	-0.13	-0.15	\$13	\$14	\$16

Act BW	83
205 Day Wt.	664
365 Day Wt.	1030
BW EPD	3.7
WW EPD	45
YW EPD	72
Milk EPD	21
M&G	44

Another bull with balanced records is a very trim, stylish bull; mother is one of my favorites.



816B



816A

819 SH CENTURION 819

Calved 4/04/2008 • Tattoo 819 • Horned Bull

KB CENTURION 179 Bar-N Centurion 921J
HH CENTURION P517 KB L1 Dominette 748
 HH MISS ORE MARK K710 Ore 4411 Mrk 7078 1ET
 HH Miss Andrew 6279

KB L1 DOMINO 661 HH Advance 492D
SH LADY DOMINO 039 Montana Miss J241
 LADY DUKE 4078 SH Duke 016
 Lady Domino 046

Fat	REA	IMF	BMI	CEZ	CHB
+0.00	-0.08	+0.13	\$12	\$10	\$15

Act BW	87
205 Day Wt.	671
365 Day Wt.	937
BW EPD	3.8
WW EPD	34
YW EPD	57
Milk EPD	17
M&G	34

This bull is out of the same sire as our top selling Centurion bull from last year's sale. He has added marbling.

821 SHR MISTER MOM 821

Calved 4/06/2008 • Tattoo 821 • Horned Bull

MISTER MOM 221 CL 1 Domino 386
/S MISTER MOM 7745 GG MS Standard 002
 /S MS PEER PLAN 526E C Masterplan 92043
 /S Peerless Lass 948

KB L1 DOMINO 661 HH Advance 492D
SH L1 LADY DOMINO 279 Montana Miss J241
 MISS SPECTACULAR 744 KB L1 Domino 427
 Lady Jack 3054

Fat	REA	IMF	BMI	CEZ	CHB
+0.01	+0.13	-0.06	\$10	\$13	\$16

Act BW	94
205 Day Wt.	729
365 Day Wt.	1015
BW EPD	5.6
WW EPD	47
YW EPD	71
Milk EPD	22
M&G	45

This guy here has always stood out among the rest; a very good gainer with a great appearance.

822 SH DIAMOND 822

Calved 4/06/2008 • Tattoo 822 • Horned Bull

JNHR DIAMOND ET 414B Bel L Diamond 12Z ET
OXH DIAMOND 2215 CH AP Amy 41Y
 OXH LILA 8124 OXH Mark Domino 5158
 OXH Sara 4130

KB L1 DOMINO 661 HH Advance 492D
SH LADY DOMINO 178 Montana Miss J241
 SH 1 MS DOMINO 6029 CL 1 Domino 9149
 Miss Domino 030

Fat	REA	IMF	BMI	CEZ	CHB
+0.00	+0.08	+0.00	\$9	\$14	\$11

Act BW	85
205 Day Wt.	595
365 Day Wt.	745
BW EPD	2.3
WW EPD	30
YW EPD	43
Milk EPD	25
M&G	40

825 SH L1 DOMINO 825

Calved 4/07/2008 • Tattoo 825 • Horned Bull

RCH ADVANCE 2139 HH Advance 965J
KB L1 DOMINO 563R RB L1 Dominette 8025
 KB DOMINETTE 3128 SNS 47G Silver Dandy 11J
 KB L1 Dominette 7127

F BONANZA 027 LPG Bonanza 52G
MISS BONANZA 227 F MS Montana 454 1ET
 LADY STANDARD 5035 DS Cooneye 0843
 Lady Duke 2013

Fat	REA	IMF	BMI	CEZ	CHB
+0.00	+0.08	+0.04	\$21	\$16	\$19

Act BW	80
205 Day Wt.	715
365 Day Wt.	766
BW EPD	2.0
WW EPD	44
YW EPD	69
Milk EPD	14
M&G	35

This is a big, growthy bull with the highest baldy maternal index in the sale. Should cross well on black cows.

826A SH MISTER MOM 826A

Calved 4/05/2008 • Tattoo 826A • Horned Bull

MISTER MOM 221 CL 1 Domino 386
 /S MISTER MOM 7745 GG MS Standard 002
 /S MS PEER PLAN 526E C Masterplan 92043
 /S Peerless Lass 948

F BONANZA 027 LPG Bonanza 52G
 MISS BONANZA 444 F MS Montana 454 1ET
 SH 1 MS DOMINO 6017 CL 1 Domino 9149
 Lady Duke 1002

Fat	REA	IMF	BMI	CEZ	CHB
+0.00	+0.08	-0.08	\$13	\$13	\$18

Act BW	95
205 Day Wt.	619
365 Day Wt.	880
BW EPD	5.4
WW EPD	50
YW EPD	81
Milk EPD	21
M&G	46

826B SHR MISTER MOM 826B

Calved 4/07/2008 • Tattoo 826B • Horned Bull

MISTER MOM 221 CL 1 Domino 386
 /S MISTER MOM 7745 GG MS Standard 002
 /S MS PEER PLAN 526E C Masterplan 92043
 /S Peerless Lass 948

KB L1 DOMINO 661 HH Advance 492D
 SH L1 LADY DOMINO 291 Montana Miss J241
 MISS SPECTACULAR 768 KB L1 Domino 427
 Lady All Pro 9011

Fat	REA	IMF	BMI	CEZ	CHB
+0.01	+0.06	-0.11	\$10	\$13	\$14

Act BW	89
205 Day Wt.	653
365 Day Wt.	1000
BW EPD	4.1
WW EPD	39
YW EPD	60
Milk EPD	19
M&G	39

A conservative marked bull with great numbers will work well on a straight herd or a crossed herd.



826B

827A SH MISTER MOM 827A

Calved 4/05/2008 • Tattoo 827A • Horned Bull

MISTER MOM 221 CL 1 Domino 386
 /S MISTER MOM 7745 GG MS Standard 002
 /S MS PEER PLAN 526E C Masterplan 92043
 /S Peerless Lass 948

F BONANZA 027 LPG Bonanza 52G
 MISS BONANZA 404 F MS Montana 454 1ET
 SH 1 MISS DOM 5056 CL 1 Domino 9149
 Miss Domino 067

Fat	REA	IMF	BMI	CEZ	CHB
+0.01	+0.09	-0.16	\$13	\$13	\$15

Act BW	83
205 Day Wt.	722
365 Day Wt.	1042
BW EPD	3.3
WW EPD	47
YW EPD	74
Milk EPD	21
M&G	45

Another good son of Mr. Mom.

827B SHR MISTER MOM 827B

Calved 4/07/2008 • Tattoo 827B • Horned Bull

MISTER MOM 221 CL 1 Domino 386
 /S MISTER MOM 7745 GG MS Standard 002
 /S MS PEER PLAN 526E C Masterplan 92043
 /S Peerless Lass 948

F EXPLORER 953 CH 82B Explorer 122E
MISS EXPLORER 327 F MS Montana 417 1ET
 SH MISS DOMINO 839 SH L1 Domino 5003
 SH 1 Miss Dom 5022

Fat	REA	IMF	BMI	CEZ	CHB
+0.01	-0.02	-0.12	\$13	\$13	\$9

Act BW	65
205 Day Wt.	725
365 Day Wt.	1025
BW EPD	1.9
WW EPD	41
YW EPD	65
Milk EPD	17
M&G	38

If you want size here it is. This guy was always the big man on campus. Not to mention he's a gentle giant that would work well in any herd.

833 SH DAKOTA LAD 833

Calved 4/10/2008 • Tattoo 833 • Horned Bull

MH DAKOTA 0230 SR Lad 447
MH DAKOTA LAD 3164 JV Angel 684
 MISS 065 DOMNET 611 WT 90 Domino 065
 MH Miss Spectre 448

F EXPLORER 953 CH 82B Explorer 122E
MISS EXPLORER 518 F MS Montana 417 1ET
 SH 1 MISS DOMINO 717 CL 1 Domino 9149
 Lady Duke 1002

Fat	REA	IMF	BMI	CEZ	CHB
+0.01	+0.09	-0.02	\$12	\$11	\$17

Act BW	95
205 Day Wt.	665
365 Day Wt.	1017
BW EPD	5.8
WW EPD	48
YW EPD	73
Milk EPD	13
M&G	37



833

836 SH DIAMOND 836

Calved 4/08/2008 • Tattoo 836 • Horned Bull

SR ROBIN HOOD 249 HR Robin Hood 52F
HH ROBIN HOOD L130 SR Franci 684
 HH MISS PATRIOT 7573 MH Patriot 3159
 HH Miss Star 3060

KB L1 DOMINO 661 HH Advance 492D
SH L1 LADY DOMINO 832 Montana Miss J241
 SH 1 MISS DOM 5011 CL 1 Domino 9149
 Miss Domino 030

Fat	REA	IMF	BMI	CEZ	CHB
+0.00	+0.09	+0.22	\$13	\$12	\$22

Act BW	96
205 Day Wt.	772
365 Day Wt.	1035
BW EPD	4.3
WW EPD	45
YW EPD	76
Milk EPD	27
M&G	49

837 SH DIAMOND 837

Calved 4/09/2008 • Tattoo 837 • Horned Bull

JNHR DIAMOND ET 414B BEL L Diamond 12Z ET
OXH DIAMOND 2215 CH AP Amy 41Y
OXH LILA 8124 OXH Mark Domino 5158
OXH Sara 4130

KB L1 DOMINO 661 HH Advance 492D
SH LADY DOMINO 081 Montana Miss J241
LADY DUKE 1000 WS DHR Duke 8430
Lady Domino 592

Fat	REA	IMF	BMI	CEZ	CHB
-0.01	+0.33	-0.12	\$7	\$11	\$17

Act BW	90
205 Day Wt.	762
365 Day Wt.	1071
BW EPD	4.4
WW EPD	46
YW EPD	65
Milk EPD	26
M&G	49

This cow has consistently been one of Tony's top producers. She is 10 years old and still producing some of our top calves. This calf has the highest milk, growth and ribeye.

842 SH DIAMOND 842

Calved 4/11/2008 • Tattoo 842 • Horned Bull

JNHR DIAMOND ET 414B BEL L Diamond 12Z ET
OXH DIAMOND 2215 CH AP Amy 41Y
OXH LILA 8124 OXH Mark Domino 5158
OXH Sara 4130

CL 1 DOMINO 9149 SH Advancer 729
SH MISS DOMINO 803 C L1 IDA 6003
LADY DUKE 2013 WS DHR Duke 8430
Lady Domino 592

Fat	REA	IMF	BMI	CEZ	CHB
+0.00	+0.03	+0.03	\$8	\$12	\$14

Act BW	90
205 Day Wt.	645
365 Day Wt.	916
BW EPD	4.0
WW EPD	37
YW EPD	53
Milk EPD	23
M&G	41

845 SH L1 DOMINO 845

Calved 4/12/2008 • Tattoo 845 • Horned Bull

RCH ADVANCE 2139 HH Advance 965J
KB L1 DOMINO 563R RB L1 Dominette 8025
KB DOMINETTE 3128 SNS 47G Silver Dandy 11J
KB L1 Dominette 7127

F EXPLORER 953 CH 82B Explorer 122E
MISS EXPLORER 310 F MS Montana 417 1ET
SH 1 MISS DOM 5017 CL 1 Domino 9149
Lady Summit 9051

Fat	REA	IMF	BMI	CEZ	CHB
+0.00	+0.06	+0.07	\$20	\$14	\$23

Act BW	91
205 Day Wt.	689
365 Day Wt.	1125
BW EPD	4.8
WW EPD	50
YW EPD	85
Milk EPD	13
M&G	38

This line one bull has good growth with moderate milk and a high scrotal area.



836

847 SH BONANZA 847

Calved 4/12/2008 • Tattoo 847 • Horned Bull

F BONANZA 027 LPG Bonanza 52G
SH BONANZA 5007 F MS Montana 454 1ET
 SH MISS DOMINO 808 CL 1 Domino 9149
 Lady Duke 2073

F EXPLORER 953 CH 82B Explorer 122E
MISS EXPLORER 418 F MS Montana 417 1ET
 MISS SPECTACULAR 792 KB L1 Domino 427
 Special Lady 4068

Fat	REA	IMF	BMI	CEZ	CHB
-0.01	+0.04	-0.05	\$14	\$10	\$22

Act BW	102
205 Day Wt.	749
365 Day Wt.	1156
BW EPD	8.5
WW EPD	55
YW EPD	97
Milk EPD	14
M&G	41

This bull has the highest adjusted weaning and yearling weight.

849 SH DAKOTA LAD 849

Calved 4/13/2008 • Tattoo 849 • Horned Bull

MH DAKOTA 0230 SR Lad 447
MH DAKOTA LAD 3164 JV Angel 684
 MISS 065 DOMNET 611 WT 90 Domino 065
 MH Miss Spectre 448

F EXPLORER 953 CH 82B Explorer 122E
MISS EXPLORER 574 F MS Montana 417 1ET
 SH 1 MISS DOM 5037 CL 1 Domino 9149
 Miss Domino 1086

Fat	REA	IMF	BMI	CEZ	CHB
+0.02	-0.07	+0.00	\$11	\$10	\$16

Act BW	90
205 Day Wt.	619
365 Day Wt.	902
BW EPD	5.9
WW EPD	47
YW EPD	72
Milk EPD	16
M&G	39

851 SH DIAMOND 851

Calved 4/13/2008 • Tattoo 851 • Horned Bull

JNHR DIAMOND ET 414B BEL L Diamond 12Z ET
OXH DIAMOND 2215 CH AP Amy 41Y
 OXH LILA 8124 OXH Mark Domino 5158
 OXH Sara 4130

KB L1 DOMINO 6102 JAL1 Domino 3565
SH LADY DOMINO 083 KB MS Virginian 0118
 SH 1 MISS DOMINO 787 CL 1 Domino 9149
 Lady Summit 1036

Fat	REA	IMF	BMI	CEZ	CHB
+0.00	+0.27	-0.06	\$11	\$13	\$15

Act BW	90
205 Day Wt.	726
365 Day Wt.	1021
BW EPD	3.9
WW EPD	40
YW EPD	60
Milk EPD	24
M&G	44

853 SH DIAMOND 853

Calved 4/13/2008 • Tattoo 853 • Horned Bull

JNHR DIAMOND ET 414B BEL L Diamond 12Z ET
OXH DIAMOND 2215 CH AP Amy 41Y
 OXH LILA 8124 OXH Mark Domino 5158
 OXH Sara 4130

F BONANZA 027 LPG Bonanza 52G
MISS BONANZA 4026 F MS Montana 454 1ET
 MISS EXPLORER 115 F Explorer 953
 Miss Spectacular 792

Fat	REA	IMF	BMI	CEZ	CHB
+0.00	+0.08	-0.17	\$10	\$11	\$17

Act BW	95
205 Day Wt.	679
365 Day Wt.	1069
BW EPD	6.1
WW EPD	50
YW EPD	81
Milk EPD	24
M&G	49

This bull is a half-brother and look-alike to the 854 bull.

861 SH MR MOM 861

Calved 4/02/2008 • Tattoo 861 • Horned Bull

MISTER MOM 221 CL 1 Domino 386
 /S MISTER MOM 7745 GG MS Standard 002
 /S MS PEER PLAN 526E C Masterplan 92043
 /S Peerless Lass 948

F BONANZA 027 LPG Bonanza 52G
 MISS BONANZA 469 F MS Montana 454 1ET
 SH LADY DOMINO 986 KB L1 Domino 661
 SH 1 MS Domino 6073

Act BW	89
205 Day Wt.	579
365 Day Wt.	931
BW EPD	4.4
WW EPD	43
YW EPD	66
Milk EPD	22
M&G	43

Fat	REA	IMF	BMI	CEZ	CHB
+0.01	+0.01	-0.13	\$11	\$13	\$14

860 NON-REGISTERED BULL

Calved 4/13/2008 • Tattoo 83

MH DAKOTA LAD 3164

F Explorer 953

MISS EXPLORER 541

Act BW	WW EPD	YW EPD	Milk	M&G	Fat	REA
83					0.18	0.13

862 SH DIAMOND 862

Calved 4/15/2008 • Tattoo 862 • Horned Bull

JNHR DIAMOND ET 414B BEL L Diamond 12Z ET
 OXH DIAMOND 2215 CH AP Amy 41Y
 OXH LILA 8124 OXH Mark Domino 5158
 OXH Sara 4130

F BONANZA 027 LPG Bonanza 52G
 MISS BONANZA 2023 F MS Montana 454 1ET
 SH LADY DOMINO 092 KB L1 Domino 6102
 Lady Standard 6018

Act BW	95
205 Day Wt.	737
365 Day Wt.	1026
BW EPD	4.9
WW EPD	47
YW EPD	67
Milk EPD	25
M&G	48

Fat	REA	IMF	BMI	CEZ	CHB
+0.00	+0.15	-0.19	\$9	\$12	\$15

This bull has high milk and good ribeye.

866 SH BONANZA 866

Calved 4/16/2008 • Tattoo 866 • Horned Bull

F BONANZA 027 LPG Bonanza 52G
 SH BONANZA 5007 F MS Montana 454 1ET
 SH MISS DOMINO 808 CL 1 Domino 9149
 Lady Duke 2073

PD ADVANCE 9023 CFR Advance 643
 LADY ADVANCE 428 PD Miss Power 301
 SH 1 MISS DOM 5064 CL 1 Domino 9149
 Special Lady 1057

Act BW	95
205 Day Wt.	716
365 Day Wt.	1022
BW EPD	6.1
WW EPD	46
YW EPD	72
Milk EPD	16
M&G	39

Fat	REA	IMF	BMI	CEZ	CHB
-0.01	-0.04	+0.04	\$13	\$12	\$18

868

SH CENTURION 868

Calved 4/16/2008 • Tattoo 868 • Horned Bull

KB CENTURION 179 Bar-N Centurion 921J
HH CENTURION P517 KB L1 Dominette 748
 HH MISS ORE MARK K710 ORE 4411 MRK 7078 1ET
 HH Miss Andrew 6279

SH L1 DOMINO 5003 GB L1 Domino 804
SH LADY DOMINO 016 Miss Domino 1042
 SH LADY SPECIAL 772 F Special 526 1ET
 Miss Domino 2041

Fat	REA	IMF	BMI	CEZ	CHB
+0.00	-0.08	+1.23	\$11	\$10	\$13

Act BW	101
205 Day Wt.	718
365 Day Wt.	1009
BW EPD	6.6
WW EPD	44
YW EPD	71
Milk EPD	17
M&G	39

This bull is a three quarter brother to the top selling bull from our 2009 sale.



868

871

SH DIAMOND 871

Calved 4/20/2008 • Tattoo 871 • Horned Bull

JNHR DIAMOND ET 414B BEL L Diamond 12Z ET
OXH DIAMOND 2215 CH AP Amy 41Y
 OXH LILA 8124 OXH Mark Domino 5158
 OXH Sara 4130

KB L1 DOMINO 6102 JA L1 Domino 3565
SH L1 LADY DOMINO 173 KB MS Virginian 0118
 SH 1 MISS DOM 5011 CL 1 Domino 9149
 Miss Domino 030

Fat	REA	IMF	BMI	CEZ	CHB
+0.01	+0.16	-0.01	\$9	\$13	\$12

Act BW	83
205 Day Wt.	685
365 Day Wt.	917
BW EPD	2.4
WW EPD	34
YW EPD	44
Milk EPD	24
M&G	41

875

SH DAKOTA LAD 875

Calved 4/05/2008 • Tattoo 875 • Horned Bull

MH DAKOTA 0230 SR Lad 447
MH DAKOTA LAD 3164 JV Angel 684
 MISS 065 DOMNET 611 WT 90 Domino 065
 MH Miss Spectre 448

F EXPLORER 953 CH 82B Explorer 122E
MISS EXPLORER 439 F MS Montana 417 1ET
 LADY STANDARD 4019 DS Cooneye 0843
 Miss Domino 049

Fat	REA	IMF	BMI	CEZ	CHB
+0.02	-0.23	-0.06	\$12	\$13	\$10

Act BW	90
205 Day Wt.	656
365 Day Wt.	1061
BW EPD	4.2
WW EPD	36
YW EPD	56
Milk EPD	12
M&G	30

8000 SH DIAMOND 8000

Calved 5/03/2008 • Tattoo 8000 • Horned Bull

JNHR DIAMOND ET 414B Bel L Diamond 12z ET
OXH DIAMOND 2215 CH AP Amy 41Y
 OXH LILA 8124 OXH Mark Domino 5158
 OXH Sara 4130

KB L1 DOMINO 661 HH Advance 492D
SH LADY DOMINO 903 Montana Miss J241
 LADY ADVANCER 3015 SH Advancer 974
 Miss Thor 388

Act BW	98
205 Day Wt.	723
365 Day Wt.	1057
BW EPD	5.0
WW EPD	44
YW EPD	66
Milk EPD	23
M&G	45

Fat	REA	IMF	BMI	CEZ	CHB
-0.01	+0.14	-0.06	\$9	\$13	\$17

This is the youngest bull in the sale. He is out of Lady Domino 903 who is one of our consistent producers. Lady Domino 903 has a good tight udder as she is 11 years old.



8000

HEIFERS

801 LADY ROBIN HOOD 801

Calved 4/11/2008 • Tattoo 801 • Horned Cow

SH ROBIN HOOD 249 HR Robin Hood 52F
HH ROBIN HOOD L130 Sr Franci 684
 HH MISS PATRIOT 7573 MH Patriot 3159
 HH Miss Star 3060

KB L1 DOMINO 661 HH Advance 492D
SH LADY DOMINO 033 Montana Miss J241
 SH 1 MISS DOM 5056 CL 1 Domino 9149
 Miss Domino 067

Act BW	72
205 Day Wt.	660
365 Day Wt.	835
BW EPD	2.3
WW EPD	36
YW EPD	60
Milk EPD	23
M&G	41

Fat	REA	IMF	BMI	CEZ	CHB
-0.01	+0.01	+0.23	\$13	\$12	\$19

807 LADY ROBIN HOOD 807

Calved 4/03/2008 • Tattoo 807 • Horned Cow

SR ROBIN HOOD 249 HR Robin Hood 52F
HH ROBIN HOOD L130 Sr Franci 684
 HH MISS PATRIOT 7573 MH Patriot 3159
 HH Miss Star 3060

F SPECIAL 526 1ET Montana Special 1ET
MISS SH SPECIAL 036 F Louise 842
 SPECIAL LADY 1052 KB MR Special 926
 Miss Ox Domino 8027

Act BW	70
205 Day Wt.	699
365 Day Wt.	794
BW EPD	1.7
WW EPD	38
YW EPD	67
Milk EPD	23
M&G	41

Fat	REA	IMF	BMI	CEZ	CHB
+0.00	+0.00	+0.10	\$14	\$13	\$17

820 LADY DOMINO 820

Calved 4/05/2008 • Tattoo 820 • Horned Cow

RCH ADVANCE 2139 HH Advance 965J
KB L1 DOMINO 563R RB L1 Dominette
 KB DOMINETTE 3128 SNS 47G Silver Dandy 11J
 KB L1 Dominette 7127

F BONANZA 027 LPG Bonanza 52G
MISS BONANZA 397 F MS Montana 454 1ET
 SH LADY SPECIAL 874 F Special 526 1ET
 Miss Domino 098

Fat	REA	IMF	BMI	CEZ	CHB
+0.00	+0.11	-0.04	\$20	\$15	\$20

Act BW	78
205 Day Wt.	640
365 Day Wt.	812
BW EPD	3.8
WW EPD	48
YW EPD	78
Milk EPD	15
M&G	39

838 LADY ROBIN HOOD 838

Calved 4/09/2008 • Tattoo 838 • Horned Cow

SR ROBIN HOOD 249 HR Robin Hood 52F
HH ROBIN HOOD L130 SR Franci 684
 HH MISS PATRIOT 7573 MH Patriot 3159
 HH Miss Star 3060

SH L1 DOMINO 5003 GB L1 Domino 804
SH MISS DOMINO 839 Miss Domino 1042
 SH 1 MISS DOM 5022 CL 1 Domino 9149
 Miss Domino 2011

Fat	REA	IMF	BMI	CEZ	CHB
+0.00	+0.02	+0.18	\$14	\$12	\$19

Act BW	88
205 Day Wt.	688
365 Day Wt.	807
BW EPD	4.6
WW EPD	39
YW EPD	63
Milk EPD	21
M&G	40

840 LADY L1 DOMINO 840

Calved 4/11/2008 • Tattoo 840 • Horned Cow

RCH ADVANCE 2139 HH Advance 965J
KB L1 DOMINO 563R RB L1 Dominette 8025
 KB DOMINETTE 3128 SNS 47G Silver Dandy 11J
 KB L1 Dominette 7127

F EXPLORER 953 CH 82B Explorer 122E
MISS EXPLORER 331 F MS Montana 417 1ET
 SH 1 MISS DOM 5037 CL 1 Domino 9149
 Miss Domino 1086

Fat	REA	IMF	BMI	CEZ	CHB
-0.01	+0.17	+0.00	\$18	\$12	\$21

Act BW	83
205 Day Wt.	663
365 Day Wt.	887
BW EPD	6.3
WW EPD	54
YW EPD	92
Milk EPD	14
M&G	41

842 LADY L1 DOMINO 842

Calved 4/11/2008 • Tattoo 843 • Horned Cow

SR ROBIN HOOD 249 HR Robin Hood 52F
HH ROBIN HOOD L130 SR Franci 684
 HH MISS PATRIOT 7573 MH Patriot 3159
 HH Miss Star 3060

KB L1 DOMINO 661 HH Advance 492D
SH LADY DOMINO 010 Montana Miss J241
 LADY STANDARD 5028 DS Cooneye 0843
 Lady Arrow 2016

Fat	REA	IMF	BMI	CEZ	CHB
-0.01	+0.05	+0.19	\$8	\$12	\$14

Act BW	90
205 Day Wt.	645
365 Day Wt.	916
BW EPD	4.0
WW EPD	37
YW EPD	53
Milk EPD	23
M&G	41

844 LADY CENTURION 844

Calved 4/12/2008 • Tattoo 844 • Horned Cow

KB CENTURION 179 Bar-N Centurion 921J
HH CENTURION P517 KB L1 Dominette 748
 HH MISS ORE MARK K710 Ore 4411 Mrk 7078 1ET
 HH Miss Andrew 6279

SH L1 DOMINO 130 KB L1 Domino 661
MISS ROBIN HOOD 322 Lady Duke 1001
 SH LADY DOMINO 039 KB L1 Domino 661
 Lady Duke 4078

Fat	REA	IMF	BMI	CEZ	CHB
+0.00	+0.00	+0.08	\$10	\$9	\$18

Act BW	84
205 Day Wt.	654
365 Day Wt.	833
BW EPD	5.8
WW EPD	42
YW EPD	71
Milk EPD	20
M&G	41

864 MISS BONANZA 864

Calved 4/15/2008 • Tattoo 864 • Horned Cow

F BONANZA 027 LPG Bonanza 52G
SH BONANZA 5007 F Ms Montanta 454 1ET
 SH MISS DOMINO 808 CL 1 Domino 9149
 Lady Duke 2073

F BONANZA 027 LPG Bonanza 52G
MISS BONANZA 3111 F MS Montana 454 1ET
 LADY STANDARD 5028 DS Cooneye 0843
 Lady Arrow 2016

Fat	REA	IMF	BMI	CEZ	CHB
+0.00	-0.10	-0.01	\$14	\$12	\$18

Act BW	75
205 Day Wt.	618
365 Day Wt.	844
BW EPD	4.3
WW EPD	46
YW EPD	76
Milk EPD	16
M&G	39

883 LADY L1 DOMINO 883

Calved 4/25/2008 • Tattoo 883 • Horned Cow

RCH ADVANCE 2139 HH Advance 965J
KB L1 DOMINO 563R RB L1 Dominette 8025
 KB DOMINETTE 3128 SNS 47G Silver Dandy 11J
 KB L1 Dominette 7127

PD ADVANCE 9023 CFR Advance 643
LADY ADVANCE 277 PD Miss Power 301
 SH 1 MISS DOMINO 762 CL 1 Domino 9149
 Lady All Pro 9005

Fat	REA	IMF	BMI	CEZ	CHB
+0.00	+0.15	+0.00	\$18	\$15	\$21

Act BW	83
205 Day Wt.	672
365 Day Wt.	820
BW EPD	4.0
WW EPD	47
YW EPD	73
Milk EPD	14
M&G	37

893 LADY ROBIN HOOD 893

Calved 4/27/2008 • Tattoo 893 • Horned Cow

SR ROBIN HOOD 249 HR Robin Hood 52F
HH ROBIN HOOD L130 SR Franci 684
 HH MISS PATRIOT 7573 MH Patriot 3159
 HH Miss Star 3060

KB L1 DOMINO 661 HH Advance 492D
SH LADY DOMINO 047 Montana Miss J241
 SH 1 MISS DOM 5022 CL 1 Domino 9149
 Miss Domino 2011

Fat	REA	IMF	BMI	CEZ	CHB
-0.01	+0.12	+0.22	\$13	\$12	\$19

Act BW	73
205 Day Wt.	664
365 Day Wt.	823
BW EPD	2.2
WW EPD	36
YW EPD	60
Milk EPD	25
M&G	43

FRIEDT HEREFORD

Welcomes You

Along with the Stroh family, we would like to welcome you to our joint production sale.

The past year has once again been a year of extremes. The record setting winter was followed by a cool and wet summer which allowed for abundant hay and crop yields and heavy weaning weights.

We are offering a larger number of bulls this year, as we now need to utilize the cowherd we have been building. This is a great set of calves by 5 herd bulls that really crossed well on our cowherd.

We strive for a balanced performance herd, with no extremes and feel this offering is a result of this philosophy. The disposition on these cattle is second to none, as our whole family is able to work with these bulls and our cowherd.

Gary, Kirsten & Kids

8733 55th St. SW • Mott, ND 58646
 701-824-2300 • Gary's Cell: 701-290-7231
 E-mail: gfriedt@hotmail.com
 Website: www.friedtherefords.com

Videos upon request

All sale bulls are guaranteed to be free of the IE gene

SELLING:

- 22 Yearlings
- 5 Commercial Yearling Hereford Heifers

HERD BULLS

Ref. Sire

A

KBL1 DOMINO 632

Calved 1/21/2006 • Tattoo 632 • Reg #: 42674348

CL 1 DOMINO 212M	CL 1 Domino 9126J 1ET
CL 1 DOMINO 417P	CL 1 Dominette 8104H 1ET
CL 1 DOMINETTE 0112K 1ET ...	CL 1 Domino 5131E
	CL 1 Dominette 411
KB L1 DOMINO 218.....	HH Advance 7046G
KB L1 DOMINETTE 415P	Montana Miss 011
KB MISS CENTURION 236.....	Bar-N Centurion 921J
	KB L1 Dominette 835

BW EPD	5.6
WW EPD	58
YW EPD	81
Milk EPD	20
M&G	49

Fat	REA	IMF	BMI	CEZ	CHB
+0.069	+0.20	+0.34	+20	+15	+28



FH L1 DOMINO 695 MF

All sire we used to maintain carcass traits. 2 powerfull sons sell. Owned by Harrel Hereford Ranch

Ref. Sire

B**FH L1 DOMINO 695 MF**

Calved 11/14/2006 • Tattoo 695 • Reg #: 42800413

HH ADVANCE 026K 1ET..... HH Advance 6052F
FH 026K DOMINO 304..... HH MS Advance 4054D
 RCH DOMINETTE 9029..... RB L1 Domino 7149
 RB L1 Dominette 5035

OXH ADVANCE 3007..... HH Advance 154A
OXH LOLA 7002..... OXH Lona 1232
 OXH MS SPIRIT 5171..... Arrow CL1 3100 1ET
 OXH Lucy 9083 1ET

BW EPD	3.5
WW EPD	54
YW EPD	84
Milk EPD	21
M&G	48

Fat	REA	IMF	BMI	CEZ	CHB
+0.03	+0.23	+0.10	\$20	\$15	\$24

**FH L1 DOMINO 695 MF**

695 sold to Pete Hettle in our 2008 sale and we retained interest in him to replace his sire. His first set of calves has impressed us in their uniformity and performance. There is a large group of bulls in the sale that are the right kind. Owned with Hettle Hereford Ranch.

Ref. Sire

C**HH ADVANCE 7022T**

Calved 1/02/2007 • Tattoo 7022 • Reg #: 42785257

CL 1 DOMINO 206M CL 1 Domino 9126J 1ET
HH ADVANCE 5212R..... CL 1 Dominette 825H
 HH MISS ADVANCE 1028L..... HH Advance 6052F
 HH Miss Advance 731G

HH ADVANCE 0094K HH Advance 836H
HH MISS ADVANCE 4158P..... HH Miss Advance 741G
 HH MISS ADVANCE 037K CL 1 Domino 824H
 HH MS Advance 8023H

BW EPD	3.6
WW EPD	49
YW EPD	79
Milk EPD	26
M&G	50

Fat	REA	IMF	BMI	CEZ	CHB
+0.04	-0.13	+0.19	\$21	\$16	\$22

7022 was purchased to moderate birthweight and increase marbling. He has a top set of bulls in the offering. Owned with Boehnke Herefords.

Thank you

FOR ATTENDING OUR SALE

Ref. Sire

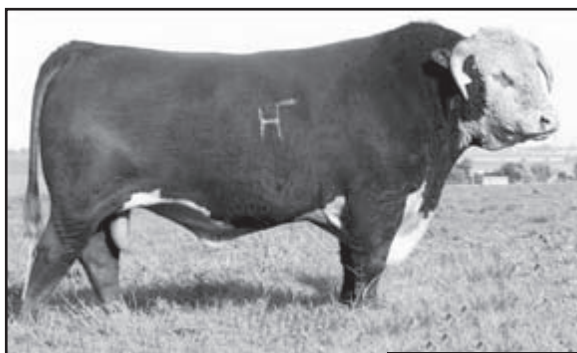
D**HH ADVANCE 7056T**

Calved 1/07/2007 • Tattoo 7056 • Reg #: 42785291

CL 1 DOMINO 206M	CL 1 Domino 9126J
HH ADVANCE 5104R	CL 1 Dominette 825H
HH MISS ADVANCE 153L	CL 1 Domino 986J
	HH Miss Advance 912J
CL 1 DOMINO 180L	HH Advance 767G 1ET
HH MISS ADVANCE 5020R ET	CL 1 Dominette 6113F
HH MISS ADVANCE 1028L	HH Advance 6052F
	HH Miss Advance 731G

BW EPD	3.4
WW EPD	64
YW EPD	96
Milk EPD	28
M&G	60

Fat	REA	IMF	BMI	CEZ	CHB
+0.00	+0.57	+0.05	\$19	\$15	\$31

**HH ADVANCE 7056T**

A sire we used A.I. We are really impressed by his calves. Acceptable birthweights and plenty of performance with a lot of eye appeal. Owned by Harrel Hereford Ranch.

Ref. Sire

E**CJH HARLAND 408**

Calved 1/20/2004 • Tattoo 408 • Reg #: 42536808

KB L1 DOMINO 519	HH Advance 311C
HH ADVANCE 9005J	CL 1 Dominette 6008
HH MS ADVANCE 4054D	L1 Domino 910282
	HH Miss Advance 218B
L1 DOMINO 920501	L1 Domino 890029
CJH L1 DOMINETTE 0064	L1 Dominette 850206
CJH L1 DOMINETTE 759	JA L1 Domino 5301
	CJH L1 Dominette 505

BW EPD	1.5
WW EPD	56
YW EPD	98
Milk EPD	32
M&G	60

Fat	REA	IMF	BMI	CEZ	CHB
+0.11	+0.23	+0.54	\$25	\$18	\$31

**CJH HARLAND 408**

Harland continues to be a popular bull in the Hereford breed. He will lower birthweights and moderate frame size. His sons are extra thick and his females are feminine with good udders. Owned by Imig Herefords, Mill Creek Herefords, Pied Piper Farms, Stuber Ranch.

YEARLING BULLS

Lot 1 FH L1 DOMINO 900

Calved 1/10/2009 • Tattoo 900 • Reg #: 43025237

FH 026K DOMINO 304..... HH Advance 026K 1ET
FH L1 DOMINO 695 MF..... RCH Dominette 9029
 OXH LOLA 7002..... OXH Advance 3007
 OXH MS Spirit 5171

OXH STEALTH 3361..... BB Patriot 0293
OXH BESS 8268..... OXH Kate 5175
 OXH LOLA 6014..... OXH Advance 3007
 OXH Brenda 4216

Fat	REA	IMF	BMI	CEZ	CHB
+0.02	+0.42	+0.12	\$16	\$16	\$24

Act BW	84
205 Day Wt.	735
365 Day Wt.	1311
BW EPD	1.5
WW EPD	48
YW EPD	80
Milk EPD	22
M&G	46



LOT 1

A herd bull prospect with all the credentials, individual performance, and a great EPD profile. He is solid marked with 2 red eyes. His 11 year old DOD boasts a REA of 103.7 and IMF of 107.7 on 7 hd. Dam is granddam of Lot 3. Will retain interest - to be announced on sale day.

Lot 2 FH L1 DOMINO 901 LF

Calved 1/12/2009 • Tattoo 901 • Reg #: 43032723

CL 1 DOMINO 417P..... CL 1 Domino 212M
KB L1 DOMINO 632..... CL 1 Dominette 0112K 1ET
 KB L1 DOMINETTE 415P..... KB L1 Domino 218
 KB Miss Centurion 236

KB L1 DOMINO 1135..... JA L1 Domino 503 2ET
FH L1 DOMINETTE 323 LF..... Montana Miss J336
 FH MISS 3007 009 LF..... OXH Advance 3007
 FH MS Wash 803

Fat	REA	IMF	BMI	CEZ	CHB
+0.06	-0.04	+0.26	\$19	\$17	\$20

Act BW	93
205 Day Wt.	685
365 Day Wt.	1176
BW EPD	3.1
WW EPD	44
YW EPD	63
Milk EPD	22
M&G	44



LOT 2

He has had the herd bull look since the day he was born. Super profile with a perfect uddered dam with an IMF of 107 on 3 hd.

Lot 3 FH L1 DOMINO 902

Calved 1/15/2009 • Tattoo 902 • Reg #: 43034275

HH ADVANCE 5104R..... CL 1 Domino 206M
HH ADVANCE 7056T..... HH Miss Advance 153L
 HH MISS ADVANCE 5020R ET..... CL1 Domino 180L
 HH Miss Advance 1028L

OXH MARK DOMINO 3043..... OXH Mark Domino 8020
FH L1 DOMINETTE 535..... OXH Christi 1019
 OXH BESS 8268..... OXH Stealth 3361
 OXH Lola 6014

Act BW	94
205 Day Wt.	736
365 Day Wt.	1338
BW EPD	3.5
WW EPD	57
YW EPD	94
Milk EPD	27
M&G	55

Fat	REA	IMF	BMI	CEZ	CHB
-0.01	+0.56	+0.06	\$17	\$16	\$29



LOT 3

Truly a herd bull prospect here. An outstanding son of HH Advance 7056T. His mother is sending her third bull through our sale and they have all been sale features. Will retain an interest – terms to be announced on sale day.

Lot 4 FH L1 DOMINO 903 AF

Calved 1/18/2009 • Tattoo 903 • Reg #: 43032724

CL 1 DOMINO 417P..... CL 1 Domino 212M
KB L1 DOMINO 632..... CL1 Dominette 0112K 1ET
 KB L1 DOMINETTE 415P..... KB L1 Domino 218
 KB Miss Centurion 236

KB L1 DOMINO 1135..... JA L1 Domino 503 2ET
FH L1 DOMINETTE 340 AF..... Montana Miss J336
 FH STARLET 104..... ST Star Mark 988
 FH MS Wash 804

Act BW	101
205 Day Wt.	745
365 Day Wt.	1263
BW EPD	4.6
WW EPD	51
YW EPD	77
Milk EPD	25
M&G	50

Fat	REA	IMF	BMI	CEZ	CHB
+0.03	+0.23	+0.16	\$18	\$15	\$24



LOT 4

An A.I. sired calf with extreme thickness and a big top. He is good haired and has a good uddered dam.

Lot 5 FH L1 DOMINO 906

Calved 1/26/2009 • Tattoo 906 • Reg #: 43034270

HH ADVANCE 5104R..... CL 1 Domino 206M
HH ADVANCE 7056T..... HH Miss Advance 153L
 HH MISS ADVANCE 5020R ET..... CL1 Domino 180L
 HH Miss Advance 1028L

AR COMMANDER 6006..... BB 7Z STD Lad 4033
FH COMMANDESS 904..... AR MS High Tech 016
 FH MISS RED 001 BP Red Standard 26W
 FH Miss DBL K3 201

Act BW	95
205 Day Wt.	691
365 Day Wt.	1243
BW EPD	3.9
WW EPD	54
YW EPD	73
Milk EPD	17
M&G	44

Fat	REA	IMF	BMI	CEZ	CHB
-0.02	+0.29	+0.08	\$19	\$15	\$25



LOT 5

A solid marked calf out of a consistent 10 year old cow. She is pictured on our website and in the Nov.-Dec. 09 Hereford America ad.

Lot 6 FH L1 DOMINO 907 MF

Calved 1/27/2009 • Tattoo 907 • Reg #: 43025239

HH ADVANCE 5212R..... CL 1 Domino 206M
HH ADVANCE 7022T..... HH Miss Advance 1028L
 HH MISS ADVANCE 4158P HH Advance 0094K
 HH Miss Advance 037K

FH 026K DOMINO 304..... HH Advance 026K 1ET
FH L1 DOMINETTE 753 MF..... RCH Dominette 9029
 OXH BESS 0343 OXH Stealth 3361
 OXH Lona 1232

Act BW	78
205 Day Wt.	707
365 Day Wt.	1307
BW EPD	2.0
WW EPD	47
YW EPD	78
Milk EPD	24
M&G	48

Fat	REA	IMF	BMI	CEZ	CHB
+0.01	+0.21	+0.15	\$21	\$17	\$24



LOT 6

Here is a light birthweight calf that has really filled out. He is out of a first calf heifer. This calf has a really gentle disposition and a 700 lb. weaning weight.

Lot 7 FH L1 DOMINO 909

Calved 1/31/2009 • Tattoo 909 • Reg #: 43025321

HH ADVANCE 5212R..... CL 1 Domino 206M
HH ADVANCE 7022T..... HH Miss Advance 1028L
 HH MISS ADVANCE 4158P HH Advance 0094K
 HH Miss Advance 037K

OXH 5125 DOMINO 7358 OXH 3100 Domino 5125
FH 7358 DOMINETTE 309 OXH Maxine 9306
 FH MISS M PLAN 303..... BP Master Plan ET
 FH L1 Vanna 510

Fat	REA	IMF	BMI	CEZ	CHB
+0.01	-0.03	+0.08	\$17	\$15	\$16

Act BW	102
205 Day Wt.	658
365 Day Wt.	1159
BW EPD	4.3
WW EPD	39
YW EPD	61
Milk EPD	23
M&G	43

A good son of HH Advance 7022T with a super side profile and a good uddered dam.

Lot 8 FH L1 DOMINO 912

Calved 2/06/2009 • Tattoo 912 • Reg #: 43026673

HH ADVANCE 9005J..... KB L1 Domino 519
CJH HARLAND 408..... HH MS Advance 4054D
 CJH L1 DOMINETTE 0064 L1 Domino 920501
 CJH L1 Dominette 759

FH 026K DOMINO 304..... HH Advance 026K 1ET
FH L1 DOMINETTE 734 RCH Dominette 9029
 FH 014 DOMINETTE 226..... FH 7358 Domino 014
 FH Commandess 904

Fat	REA	IMF	BMI	CEZ	CHB
+0.06	+0.35	+0.35	\$24	\$16	\$31

Act BW	87
205 Day Wt.	754
365 Day Wt.	1381
BW EPD	3.0
WW EPD	60
YW EPD	98
Milk EPD	25
M&G	54



LOT 8

Out of a good first calf heifer he boasts a 754 weaning weight. Solid marked with eye pigment, this Harland sired calf is good.

Lot 9 FH L1 DOMINO 916 MF

Calved 2/11/2009 • Tattoo 916 • Reg #: 43025240

HH ADVANCE 5212R..... CL 1 Domino 206M
HH ADVANCE 7022T..... HH Miss Advance 1028L
 HH MISS ADVANCE 4158P HH Advance 0094K
 HH Miss Advance 037K

FH 026K DOMINO 304..... HH Advance 026K 1ET
FH L1 DOMINETTE 729 MF RCH Dominette 9029
 FH L1 DOMINETTE 441 MF OXH Domino 1095
 OXH Bess 0343

Fat	REA	IMF	BMI	CEZ	CHB
+0.02	+0.21	+0.22	\$20	\$15	\$27

Act BW	86
205 Day Wt.	732
365 Day Wt.	1239
BW EPD	3.4
WW EPD	52
YW EPD	90
Milk EPD	25
M&G	51

86 lb. birthweight out of a good first calf heifer. A daughter of 304, he has consistently put good udders on his females.

Lot 10 FH L1 DOMINO 919

Calved 2/14/2009 • Tattoo 921 • Reg #: 43051299

HH ADVANCE 5212R..... CL 1 Domino 206M
HH ADVANCE 7022T..... HH Miss Advance 1028L
 HH MISS ADVANCE 4158P HH Advance 0094K
 HH Miss Advance 037K

FH 026K DOMINO 304..... HH Advance 026K 1ET
FH L1 DOMINETTE 696..... RCH Dominette 9029
 FH MISS GENERAL 202..... JV General 660
 UU Ms Neff

Act BW	98
205 Day Wt.	856
365 Day Wt.	1407
BW EPD	3.2
WW EPD	51
YW EPD	84
Milk EPD	27
M&G	52

Fat	REA	IMF	BMI	CEZ	CHB
+0.03	+0.14	+0.20	\$22	\$16	\$25

86 lb. birthweight out of a good first calf heifer. A daughter of 304, he has consistently put good udders on his females.

Lot 11 FH L1 DOMINO 921 LF

Calved 2/15/2009 • Tattoo 921 • Reg #: 43025323

FH 026K DOMINO 304..... HH Advance 026K 1ET
FH L1 DOMINO 695 MF..... RCH Dominette 9029
 OXH LOLA 7002..... OXH Advance 3007
 OXH Ms Spirit 5171

CL 1 DOMINO 5131E..... CL 1 Domino 166
TL 5131 DOMINETTE 129T..... CL 1 Dominette 0046
 MISS LT ACHIEVER 204..... DR Achiever 8403
 Miss Dak Volts 060

Act BW	92
205 Day Wt.	642
365 Day Wt.	1199
BW EPD	2.7
WW EPD	43
YW EPD	71
Milk EPD	19
M&G	41

Fat	REA	IMF	BMI	CEZ	CHB
+0.03	+0.11	+0.04	\$16	\$15	\$17

Solid marked calf with some eye pigment. He is smooth made through the shoulders and is out of a consistent CL1 Domino 5131 dam.

Lot 12 FH L1 DOMINO 925 AF

Calved 2/18/2009 • Tattoo 925 • Reg #: 43026677

HH ADVANCE 9005J..... KB L1 Domino 519
CJH HARLAND 408..... HH MS Advance 4054D
 CJH L1 DOMINETTE 0064 L1 Domino 920501
 CJH L1 Dominette 759

H5 9126 DOMINO 573 CL 1 Domino 9126J 1ET
FH L1 DOMINETTE 738 AF..... H5 MS 409 Dom 7154
 FH L1 DOMINETTE 340 AF KB L1 Domino 1135
 FH Starlet 104

Act BW	92
205 Day Wt.	781
365 Day Wt.	1375
BW EPD	2.9
WW EPD	57
YW EPD	98
Milk EPD	32
M&G	61

Fat	REA	IMF	BMI	CEZ	CHB
+0.04	+0.43	+0.22	\$22	\$17	\$30



LOT 12

Another Harland calf with exceptional thickness and length of body. He is out of a 9216J granddaughter.



A TYPICAL 304 DAUGHTER IN PRODUCTION.

Lot 13 FH L1 DOMINO 922

Calved 2/15/2009 • Tattoo 922 • Reg #: 43025244

FH 026K DOMINO 304..... HH Advance 026K 1ET
FH L1 DOMINO 695 MF..... RCH Dominette 9029
 OXH LOLA 7002..... OXH Advance 3007
 OXH Ms Spirit 5171

FH 026K DOMINO 304..... HH Advance 026K 1ET
FH L1 DOMINETTE 647..... RCH Dominette 9029
 UU MS NEFF 9057..... UU Yampa Dom 6016
 UU Ms Super 5117

Fat	REA	IMF	BMI	CEZ	CHB
+0.03	+0.25	+0.16	\$19	\$13	\$25

Act BW	97
205 Day Wt.	704
365 Day Wt.	1165
BW EPD	4.7
WW EPD	54
YW EPD	89
Milk EPD	20
M&G	47

Tremendous quarter and top to this calf. He really travels wide.

Lot 14 FH L1 DOMINO 923

Calved 2/17/2009 • Tattoo 923 • Reg #: 43026676

HH ADVANCE 9005J..... KB L1 Domino 519
CJH HARLAND 408..... HH MS Advance 4054D
 CJH L1 DOMINETTE 0064 L1 Domino 920501
 CJH L1 Dominette 759

HH ADVANCE 026K 1ET..... HH Advance 6052F
FH MISS L1 026K 411..... HH Ms Advance 4054D
 FH PATTI 701 MH Patriot 3159
 FH Miss Red 001

Fat	REA	IMF	BMI	CEZ	CHB
+0.07	+0.36	+0.34	\$21	\$16	\$25

Act BW	90
205 Day Wt.	680
365 Day Wt.	1153
BW EPD	1.7
WW EPD	47
YW EPD	81
Milk EPD	25
M&G	49



LOT 14

Another super thick calf out of Harland with a lower BW and BW EPD's. Granddam is mother of Lot 16.

Lot 15 FH L1 DOMINO 924

Calved 2/17/2009 • Tattoo 924 • Reg #: 43025242

HH ADVANCE 5212R..... CL 1 Domino 206M
HH ADVANCE 7022T..... HH Miss Advance 1028L
 HH MISS ADVANCE 4158P HH Advance 0094K
 HH Miss Advance 037K

FH 026K DOMINO 304..... HH Advance 026K 1ET
FH L1 DOMINETTE 652..... RCH Dominette 9029
 FH PATTI 516 OXH Stealth 2342
 BB Miss Domino 6012

Act BW	94
205 Day Wt.	688
365 Day Wt.	1242
BW EPD	3.9
WW EPD	49
YW EPD	84
Milk EPD	21
M&G	45

Fat	REA	IMF	BMI	CEZ	CHB
+0.02	+0.08	+0.13	\$20	\$15	\$23



LOT 15

A well balanced calf that is thick and walk square on all four feet. Good yellow hair.

Lot 16 FH L1 DOMINO 936

Calved 2/25/2009 • Tattoo 936 • Reg #: 43034271

HH ADVANCE 5104R..... CL 1 Domino 206M
HH ADVANCE 7056T..... HH Miss Advance 153L
 HH MISS ADVANCE 5020R ET... CL1 Domino 180L
 HH Miss Advance 1028L

MH PATRIOT 3159..... BB Patriot 0293
FH PATTI 701..... MH Miss Donna 921
 FH MISS RED 001 BP Red Standard 26W
 FH Miss Dbl K3 201

Act BW	95
205 Day Wt.	802
365 Day Wt.	1313
BW EPD	4.2
WW EPD	59
YW EPD	89
Milk EPD	25
M&G	55

Fat	REA	IMF	BMI	CEZ	CHB
+0.01	+0.57	+0.09	\$15	\$12	\$28



LOT 16

An outstanding calf with a lot of top, quarter, and stifle. His 12 year old dam can still bring in a top weaning weight and boasts a REA of 109 and IMF of 111.8 on 4 hd.

Lot 17 FH L1 DOMINO 926

Calved 2/18/2009 • Tattoo 926 • Reg #: 43034272

HH ADVANCE 5104R..... CL 1 Domino 206M
HH ADVANCE 7056T..... HH Miss Advance 153L
 HH MISS ADVANCE 5020R ET..... CL1 Domino 180L
 HH Miss Advance 1028L

KB L1 DOMINO 1135 JA L1 Domino 503 2ET
FH L1 DOMINETTE 541 AF Montana Miss J336
 OXH SHELA 1193 OXH Signature 8346
 OXH Patti 7167

Fat	REA	IMF	BMI	CEZ	CHB
-0.01	+0.35	+0.11	\$17	\$15	\$27

Act BW	97
205 Day Wt.	751
365 Day Wt.	1290
BW EPD	3.8
WW EPD	53
YW EPD	81
Milk EPD	25
M&G	51



LOT 17

Another wide tracking son of 7056T. He has a super profile and an outstanding uddered, moderate framed dam.

Lot 19 FH L1 DOMINO 935 MF

Calved 2/23/2009 • Tattoo 935 • Reg #: 43025247

HH ADVANCE 5212R..... CL 1 Domino 206M
HH ADVANCE 7022T..... HH Miss Advance 1028L
 HH MISS ADVANCE 4158P HH Advance 0094K
 HH Miss Advance 037K

KB L1 DOMINO 1135 JA L1 Domino 503 2ET
FH L1 DOMINETTE 529 MF Montana Miss J336
 OXH JEAN 9250..... OXH Signature 6360
 OXH Patti 2227

Fat	REA	IMF	BMI	CEZ	CHB
+0.01	-0.08	+0.14	\$17	\$15	\$18

Act BW	97
205 Day Wt.	621
365 Day Wt.	1157
BW EPD	4.2
WW EPD	39
YW EPD	68
Milk EPD	22
M&G	42

Dehorned. A moderate framed bull with a good uddered dam.

Lot 20 FH L1 DOMINO 946

Calved 3/08/2009 • Tattoo 946 • Reg #: 43025259

FH 026K DOMINO 304..... HH Advance 026K 1ET
FH L1 DOMINO 695 MF..... RCH Dominette 9029
 OXH LOLA 7002..... OXH Advance 3007
 OXH Ms Spirit 5171

UU YAMPA DOM 6016 DH Yampa Dominator
UU MS NEFF 0078..... UU Ms 804 4024
 UU MS DONALD 7010..... Sr Mark Donald 312
 UU Ms Admiral 2221

Fat	REA	IMF	BMI	CEZ	CHB
+0.03	+0.10	+0.16	\$18	\$15	\$20

Act BW	92
205 Day Wt.	686
365 Day Wt.	1197
BW EPD	2.0
WW EPD	43
YW EPD	71
Milk EPD	20
M&G	41

A younger calf that is really square and full of muscle when viewed from behind. He is out of a good Van Newkirk bred dam.

Lot 21 FH L1 DOMINO 951 AF

Calved 3/18/2009 • Tattoo 951 • Reg #: 43025268

FH 026K DOMINO 304..... HH Advance 026K 1ET
FH L1 DOMINO 695 MF..... RCH Dominette 9029
 OXH LOLA 7002..... OXH Advance 3007
 OXH Ms Spirit 5171

GB L1 DOMINO 5136..... GB L1 Domino 5171
IH 5136 DOMINET 813..... GB L1 Dom PRCS 180
 IH 324 DOMINETTA 5901 WHR GE Domino 324
 IH Duchess 0391

Fat	REA	IMF	BMI	CEZ	CHB
+0.01	+0.23	+0.07	\$16	\$13	\$23

Act BW	92
205 Day Wt.	682
365 Day Wt.	1285
BW EPD	4.4
WW EPD	52
YW EPD	80
Milk EPD	22
M&G	48

Attractive made calf with 103 weaning ratio. His 10 year old Imig bred dam has 2 super 9126J daughters in the herd.

Lot 22 FH L1 DOMINO 949

Calved 3/17/2009 • Tattoo 949 • Reg #: 43025315

FH 026K DOMINO 304..... HH Advance 026K 1ET
FH L1 DOMINO 695 MF..... RCH Dominette 9029
 OXH LOLA 7002..... OXH Advance 3007
 OXH Ms Spirit 5171

BIG SKY 946..... CH 82B Explorer 122E
FH MISS BIG SKY 341..... F Ms Power 340
 RB L1 DOMINETTE 7100 OXH Mark Domino 5158
 RB L1 Dominette 5035

Fat	REA	IMF	BMI	CEZ	CHB
-0.01	+0.20	+0.06	\$20	\$16	\$22

Act BW	92
205 Day Wt.	662
365 Day Wt.	1236
BW EPD	4.3
WW EPD	46
YW EPD	73
Milk EPD	23
M&G	46

His sire 695, put a consistent pattern on his calves. 949's dam had a son sell to Bruce Herr in 2009.



MOTHER OF LOT 22

Lot 23 FH L1 DOMINO 958

Calved 3/28/2009 • Tattoo 935 • Reg #: 43025247

FH 026K DOMINO 304..... HH Advance 026K 1ET
FH L1 DOMINO 695 MF..... RCH Dominette 9029
 OXH LOLA 7002..... OXH Advance 3007
 OXH Ms Spirit 5171

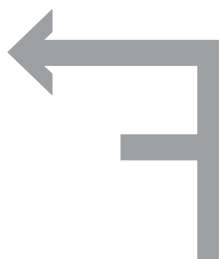
UU YAMPA DOM 6016 DH Yampa Dominator
UU MS NEFF 0161..... UU Ms 804 4024
 UU MS 804 7027 GB L1 Domino 804
 UU Ms Donald 5085

Fat	REA	IMF	BMI	CEZ	CHB
+0.04	+0.14	+0.19	\$18	\$14	\$23

Act BW	92
205 Day Wt.	679
365 Day Wt.	1305
BW EPD	3.8
WW EPD	49
YW EPD	84
Milk EPD	21
M&G	46

Another calf by 695. 3/4 brother to Lot 20. These 2 are like peas in a pod.

T S



For more information contact:

STROH HEREFORDS

Tony & Leona Stroh 701-764-5217

Mike & Dawn Stroh 701-573-4373

10550 Hwy 200 • Killdeer, ND 58640

E-mail: acmecatl@ndsupernet.com

FRIEDT HEREFORDS

Gary & Kirsten Friedt • Megan, Lindsey & Aaron

8733 55th St. SW

Mott, ND 58646

701-824-2300

E-mail: gfriedt@hotmail.com

